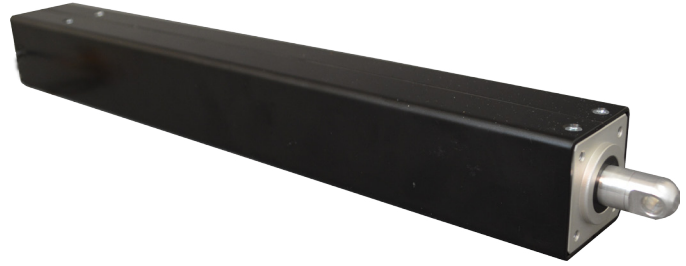


LRM23 Rod Actuators

FEATURES

- 68mm Square
- Push Pull Actuator
- Max Load up to 360lbs
- 1.8° Step Angle
- Stroke Length up to 12in
- Multiple Lead Screw Options



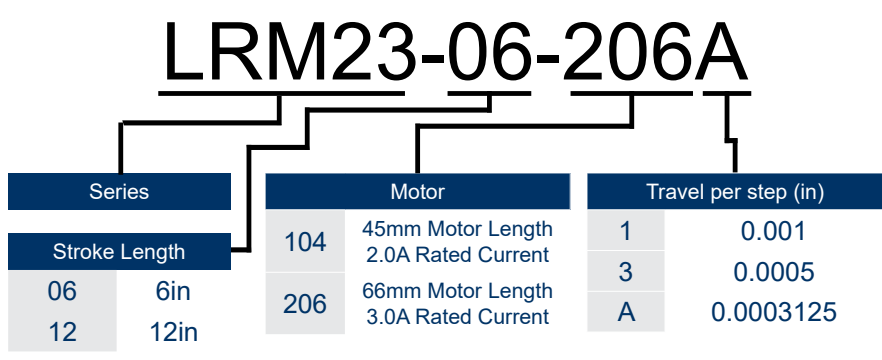
DESCRIPTION

The LRM23 Series is a Precision Rod Actuator with a maximum load capacity of 360 pounds. This rod actuator is powered by a linear step motor, boasts speeds up to 1.2in/s, and the stroke lengths up to 12in.

SPECIFICATIONS

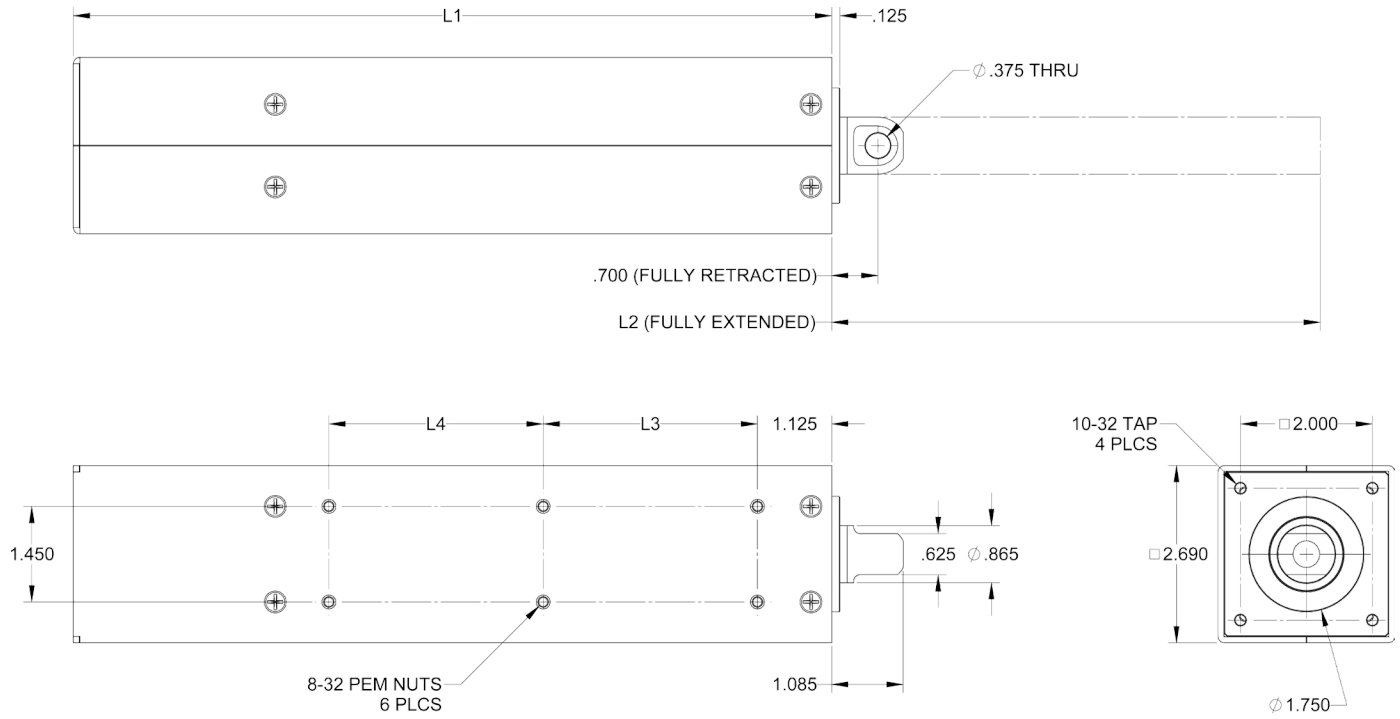
Series #	Stroke Length (in)	Load Capacity (lb)	Screw Lead (in)	Travel Per Step (in)	Rated Current (A)	Bipolar Series Inductance (mH)	Bipolar Series Resistance (ohms)	Weight (lb)
LRM23-06-1041	6	85	0.200	0.001	2.0	1.9	1.62	3.1
LRM23-06-1043	6	175	0.100	0.0005	2.0	1.9	1.62	3.1
LRM23-06-104A	6	269	0.0625	0.0003125	2.0	1.9	1.62	3.1
LRM23-06-2061	6	112	0.200	0.001	3.0	1.6	1.0	4.0
LRM23-06-2063	6	224	0.100	0.0005	3.0	1.6	1.0	4.0
LRM23-06-206A	6	358	0.0625	0.0003125	3.0	1.6	1.0	4.0
LRM23-12-1041	12	85	0.200	0.001	2.0	1.9	1.62	3.9
LRM23-12-1043	12	175	0.100	0.0005	2.0	1.9	1.62	3.9
LRM23-12-104A	12	269	0.0625	0.0003125	2.0	1.9	1.62	3.9
LRM23-12-2061	12	112	0.200	0.001	3.0	1.6	1.0	4.8
LRM23-12-2063	12	224	0.100	0.0005	3.0	1.6	1.0	4.8
LRM23-12-206A	12	358	0.0625	0.0003125	3.0	1.6	1.0	4.8

ORDERING INFORMATION



L011696

DIMENSIONS



MODEL	L1	L2	L3	L4
LRM23-6	11.500	6.700	3.250	3.250
LRM23-12	17.500	12.700	6.250	6.250

*UNITS ARE IN INCHES

WIRING DIAGRAM / TORQUE CURVE

